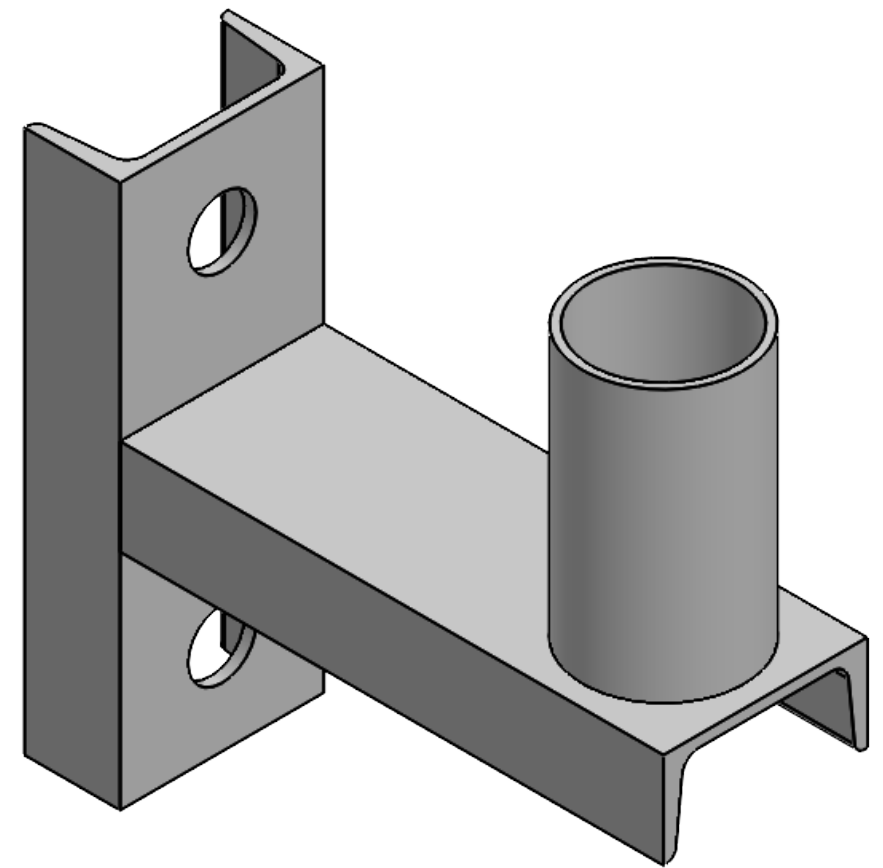
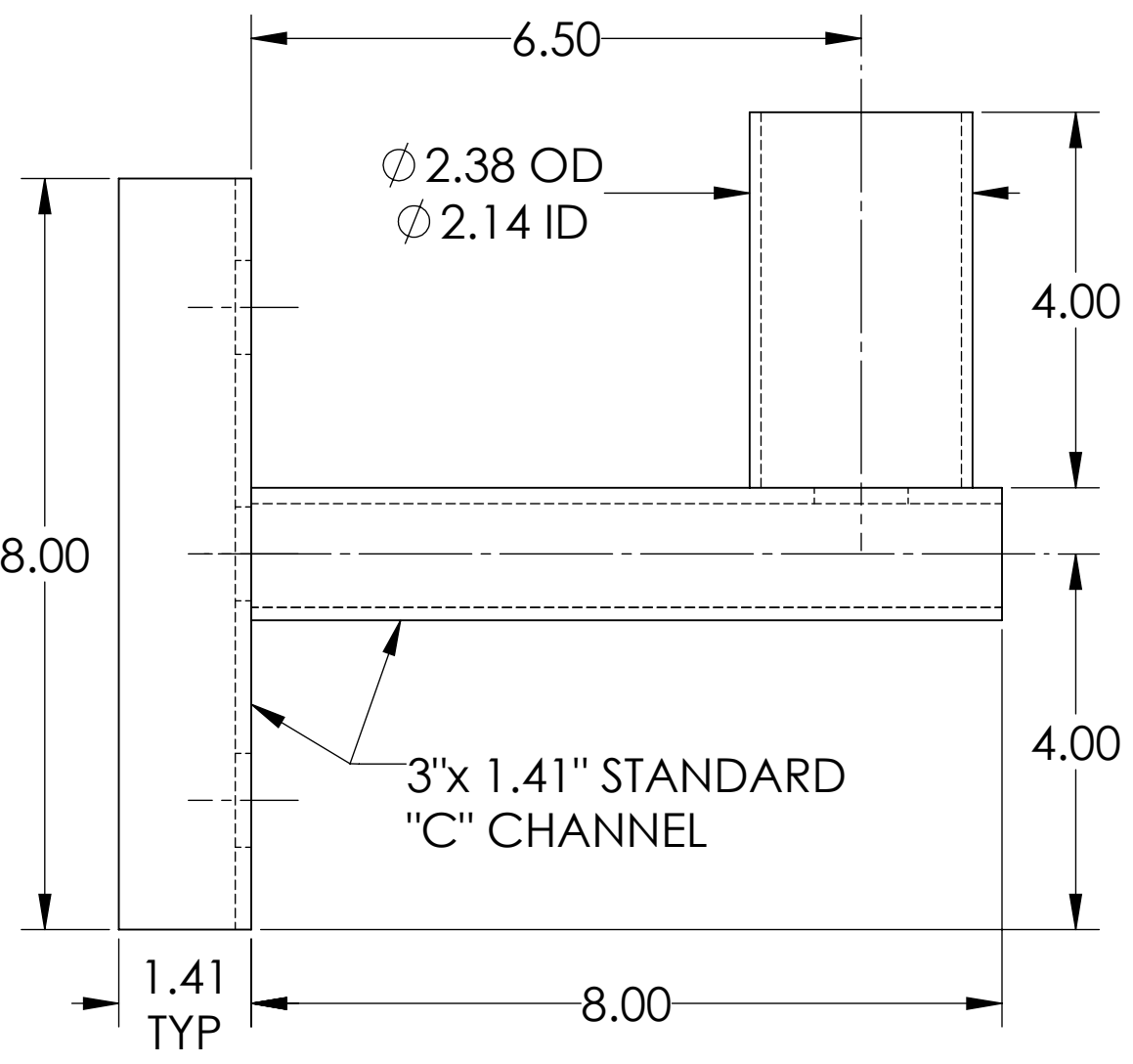
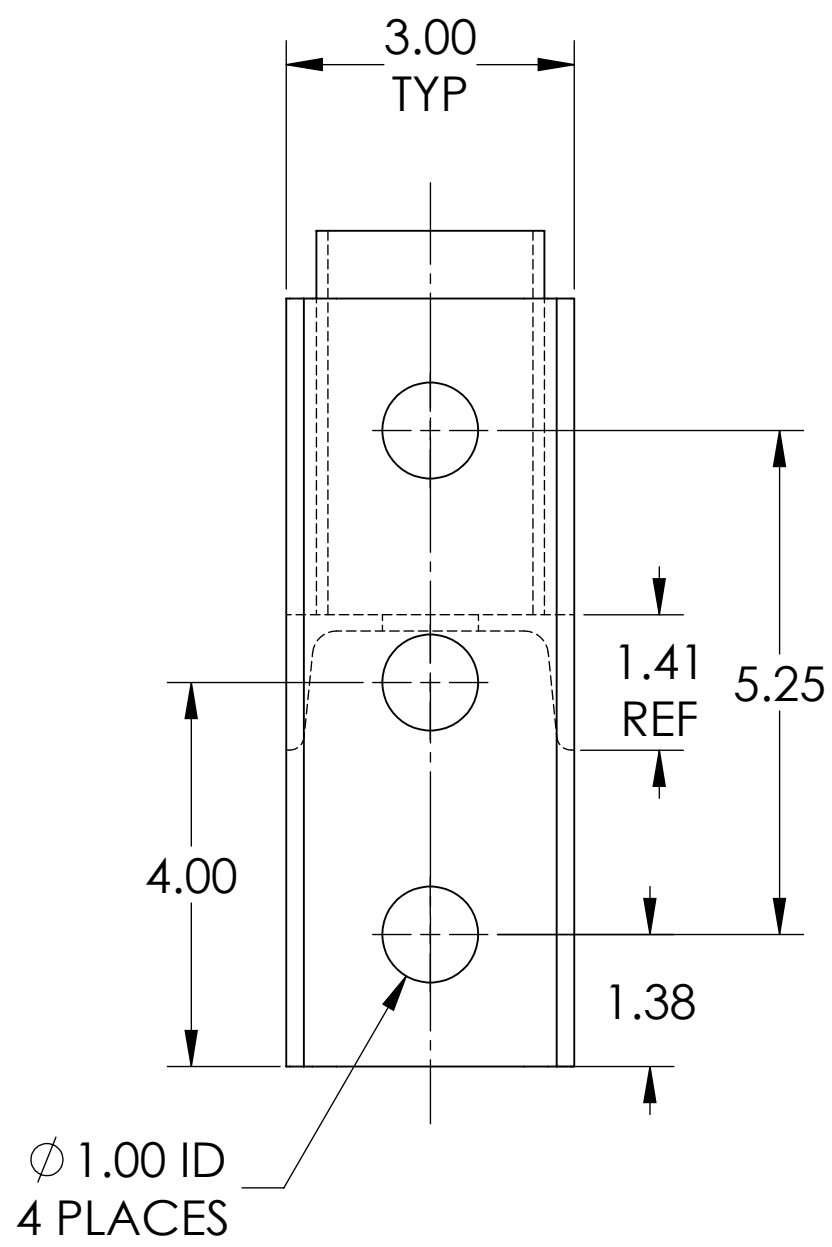


4 3 2 1

B

B




A

A

All dimensions and specifications are subject to change without any notice.

**PROPRIETARY AND CONFIDENTIAL**  
THE INFORMATION CONTAINED IN THIS DRAWING IS THE SOLE PROPERTY OF *Energy Light, Inc.* ANY REPRODUCTION IN PART OR AS A WHOLE WITHOUT THE WRITTEN PERMISSION OF *Energy Light, Inc.* IS PROHIBITED.

		UNLESS OTHERWISE SPECIFIED:		NAME	DATE	TITLE:  <div>Tenon Arm for Wood Poles</div>		
		DIMENSIONS ARE IN INCHES TOLERANCES: FRACTIONAL ± 1/64 ANGULAR: ± 0.5° TWO PLACE DECIMAL ±0.01 THREE PLACE DECIMAL ±0.005	DRAWN	MKA	10-30-20			
			ENG APPR.					
			MFG APPR.					
		INTERPRET GEOMETRIC TOLERANCING PER:	<div> Energy Light, Inc. 1881 Rose Road Lake Zurich, IL 60047</div>			SIZE	ITEM NO.	REV
		MATERIAL <div>STEEL</div>		<div><b>B</b></div>	<div>10088</div>			
NEXT ASSY	USED ON	FINISH						
APPLICATION		DO NOT SCALE DRAWING				SCALE: 1:2	WEIGHT: 6.3 lbs	SHEET 1 OF 1