

4

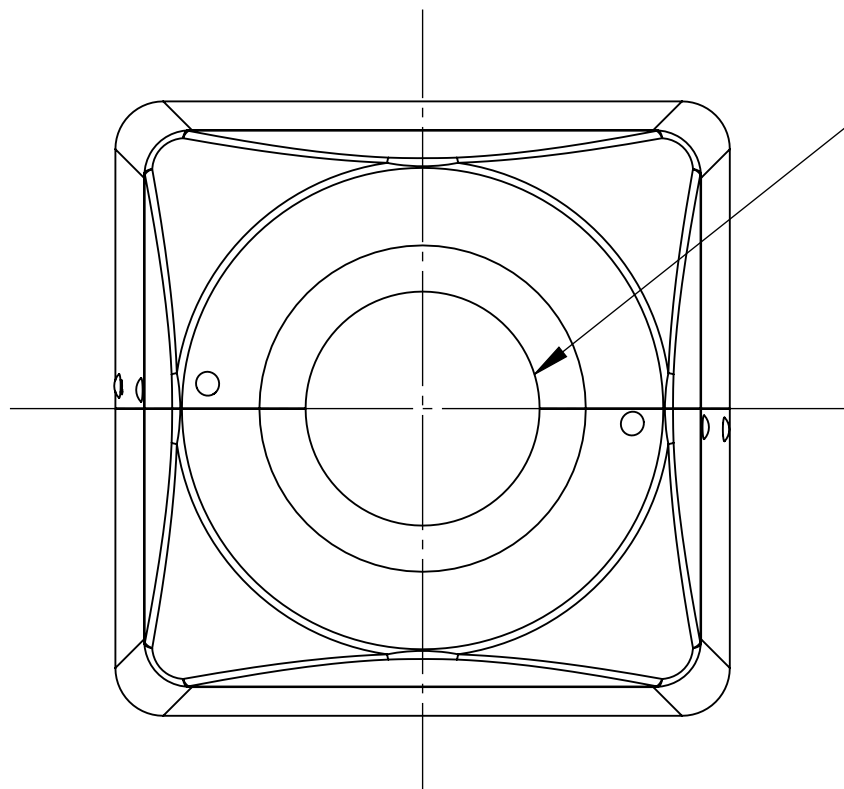
3

2

1

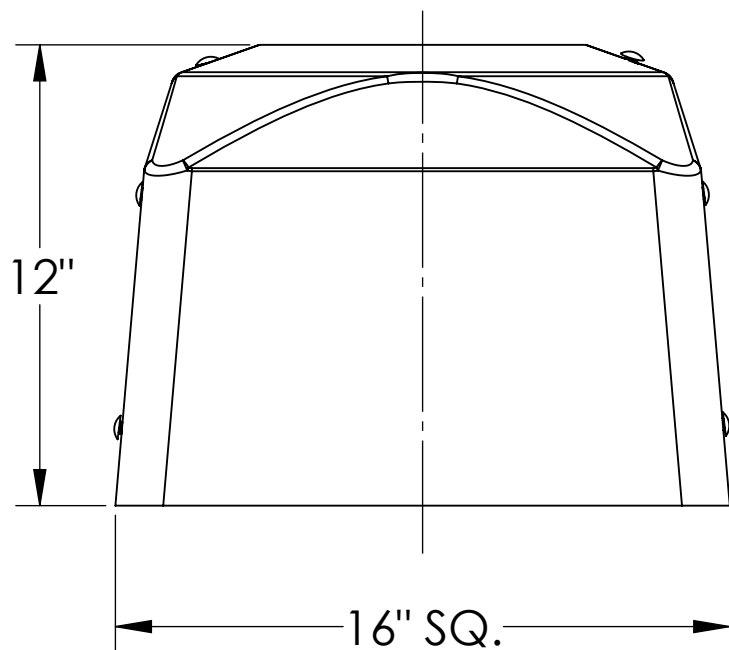
B

B

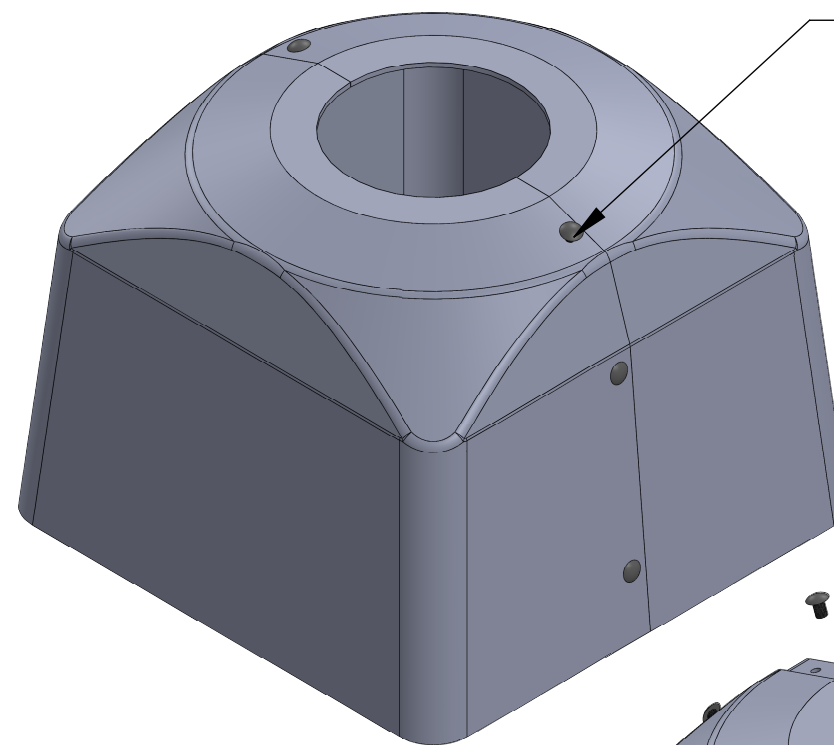


Opening  
Per customer  
requirement

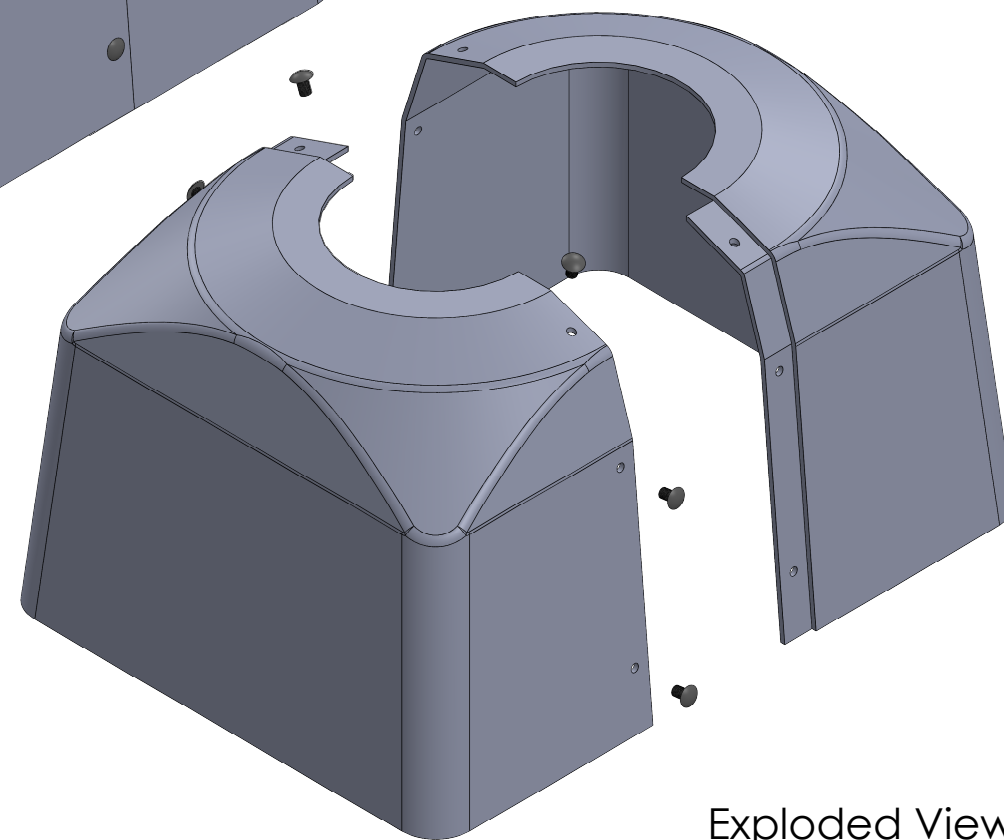
Top View



Front View



Plastic  
Self-Locking  
Rivets included




Exploded View

Note:  
Shipped unassembled

All dimensions and specifications are  
subject to change without any notice.

**PROPRIETARY AND CONFIDENTIAL**  
THE INFORMATION CONTAINED IN  
THIS DRAWING IS THE SOLE  
PROPERTY OF **Energy Light, Inc.**  
ANY REPRODUCTION IN PART OR  
AS A WHOLE WITHOUT THE WRITTEN  
PERMISSION OF **Energy Light, Inc.**  
IS PROHIBITED.

		UNLESS OTHERWISE SPECIFIED:  DIMENSIONS ARE IN INCHES TOLERANCES: FRACTIONAL ± 1/64 ANGULAR: ± 0.5° TWO PLACE DECIMAL ±0.01 THREE PLACE DECIMAL ±0.005		NAME	DATE	TITLE: Extra Large Light Pole Base Cover (For Round Poles)			
			DRAWN	MKA	02-10-21				
			ENG APPR.						
			MFG APPR.						
			Q.A.						
		INTERPRET GEOMETRIC TOLERANCING PER:	 <b>Energy Light, Inc.</b> 1881 Rose Road Lake Zurich, IL 60047						
		MATERIAL  ABS							
		FINISH							
NEXT ASSY	USED ON								
APPLICATION		DO NOT SCALE DRAWING							
			SIZE <b>B</b>		ITEM NO. <b>1829</b>			REV	
			SCALE: 1:5		WEIGHT: 3 lbs		SHEET 1 OF 2		

4

3

2

1

A

A