

4

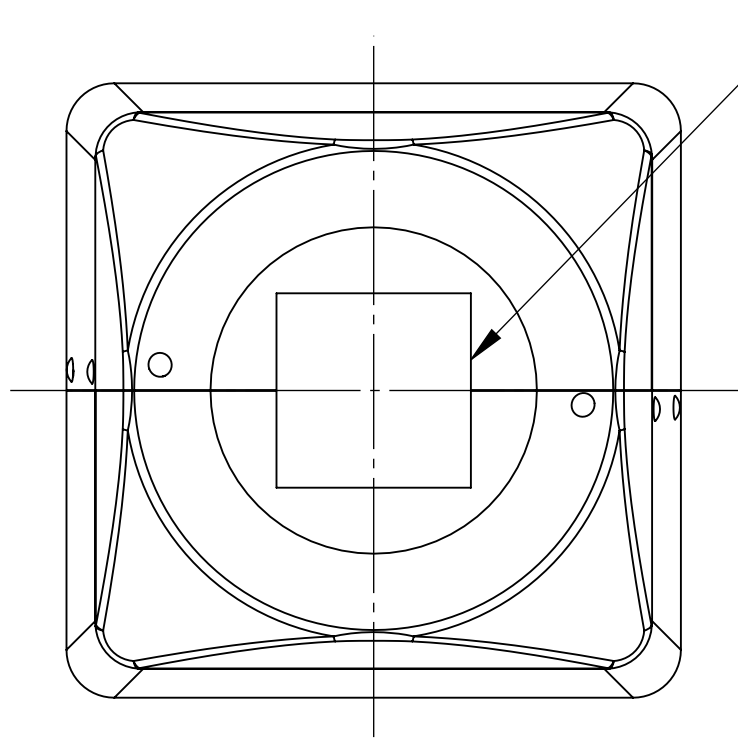
3

2

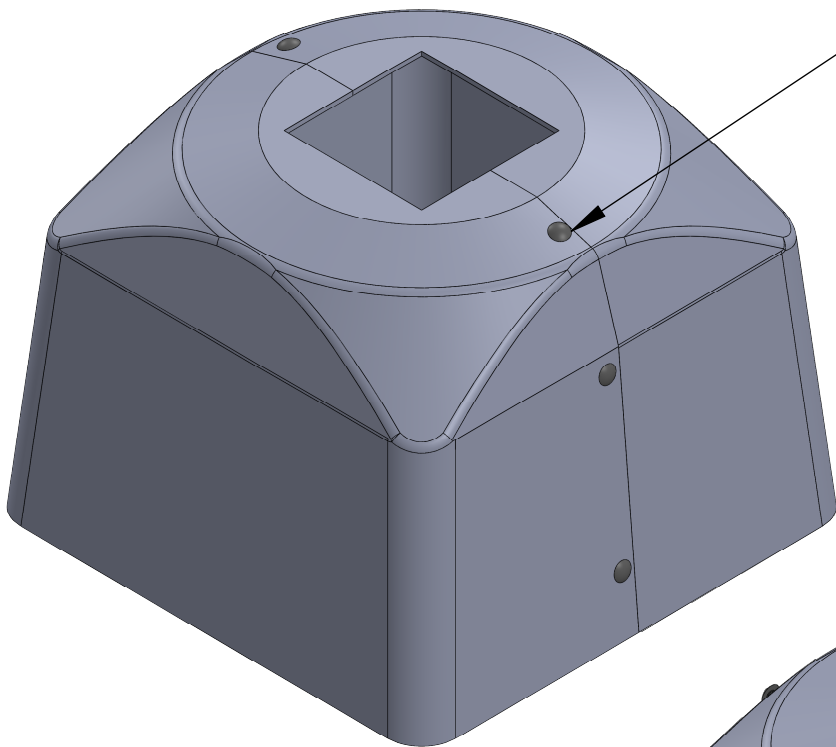
1

B

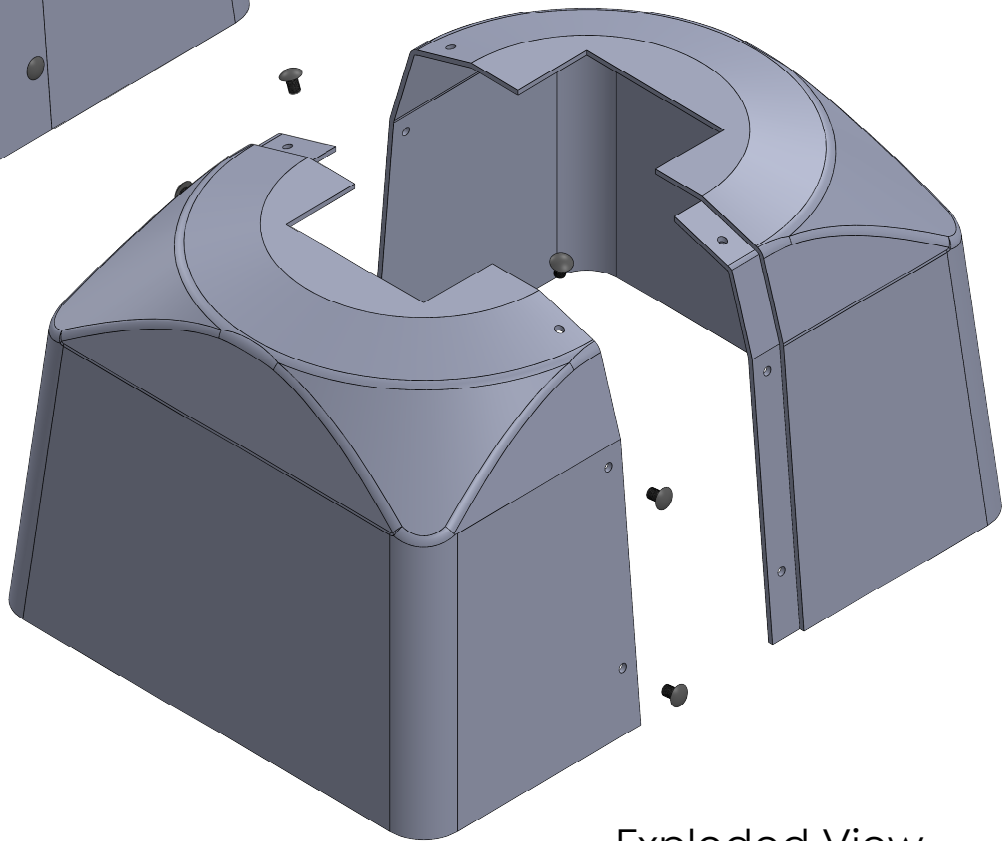
B



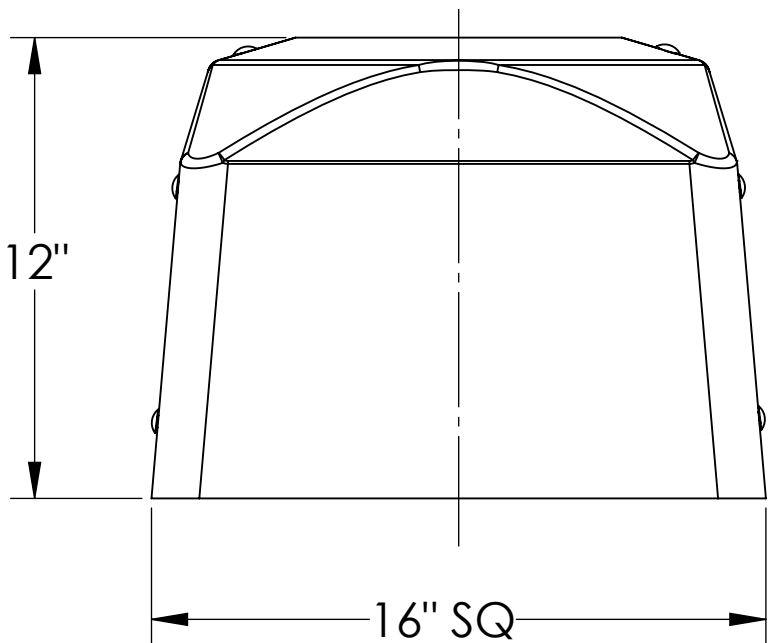
Opening
Per customer
requirement



Plastic
Self-Locking
Rivets included



Exploded View




Front View

Note:
Shipped unassembled

All dimensions and specifications are
subject to change without any notice.

PROPRIETARY AND CONFIDENTIAL
THE INFORMATION CONTAINED IN
THIS DRAWING IS THE SOLE
PROPERTY OF **Energy Light, Inc.**
ANY REPRODUCTION IN PART OR
AS A WHOLE WITHOUT THE WRITTEN
PERMISSION OF **Energy Light, Inc.**
IS PROHIBITED.

		UNLESS OTHERWISE SPECIFIED:		NAME	DATE	TITLE: Extra Large Light Pole Base Cover (For Square Poles)		
		DIMENSIONS ARE IN INCHES TOLERANCES: FRACTIONAL ± 1/64 ANGULAR: ± 0.5° TWO PLACE DECIMAL ±0.01 THREE PLACE DECIMAL ±0.005	DRAWN	MKA	02-10-21			
			ENG APPR.					
			MFG APPR.					
			Q.A.			SIZE B ITEM NO. 1829 REV		
		INTERPRET GEOMETRIC TOLERANCING PER:	 Energy Light, Inc. 1881 Rose Road Lake Zurich, IL 60047					
		MATERIAL						
NEXT ASSY	USED ON	FINISH						
APPLICATION		DO NOT SCALE DRAWING				SCALE: 1:5		
						WEIGHT: 3 lbs		SHEET 2 OF 2

4

3

2

1

A

A