

# PK0942A

## Light Pole Kit with Two Adjustable LED Light, Selectable Wattage 150/200/240/300 & Color Temperature, 20-30 Foot Pole Height Options



Job: \_\_\_\_\_ State: \_\_\_\_\_ Client Name: \_\_\_\_\_  
 Job Site: \_\_\_\_\_ Approvals: \_\_\_\_\_ Date: \_\_\_\_\_  
 Notes: \_\_\_\_\_

### Commercial-grade LED Light Pole Assembly Includes:

Square steel light pole, Two LED lights complete with adjustable slip fitter and hardware, set of anchor bolts and a base cover.

### Light Pole:

**Pole Shaft:** Commercial grade steel with minimum yield strength of 55,000 psi.  
 20 ft. poles: 4" square X 11 gauge; 25 ft. poles: 4" square X 7 gauge;  
 30 ft poles: 5" square X 7 gauge.

**Pole Height:** Standard pole height is 20 ft. Optional heights are 25 ft. and 30 ft.  
 Custom heights are also available.

**Anchor Bolts:** A set of 4 galvanized steel anchor bolts is provided.  
 Each anchor bolt includes 2 nuts and 2 washers.

**Bolt Circle:** 4"sq. Pole: 8-1/2" Bolt Circle (Bolt Circle range: 8"-11")  
 30 ft poles: 11" Bolt Circle (Bolt Circle range: 10" - 12")

**Handhole:** 3" X 5" size reinforced handhole is located at 18 inches from the base. A ground lug with set screw is located near the handhole opening for proper grounding of the pole.

**Color:** Dark Bronze

**Base Cover:** ABS Plastic base cover with rivets.

**Warranty:** 1 Year

### LED Fixture:

**Material:** Aluminum construction with integrated fins to maximize heat dissipation.

**Color:** Dark Bronze.

**Preset Power:** 300 Watts

**Voltage:** 120-277 Volt standard.

**Selectable Colors:** 3000K; 4000K; 5000K

**Preset Color Temperature:** 5000K.

**Light Distribution:** Type 3 standard.

Type 4 and Type 5 options as special order.

**Photocell:** Photocell is optional.

**Dimming:** 0-10V Dimming Capable.

Dimming control not provided (field install).

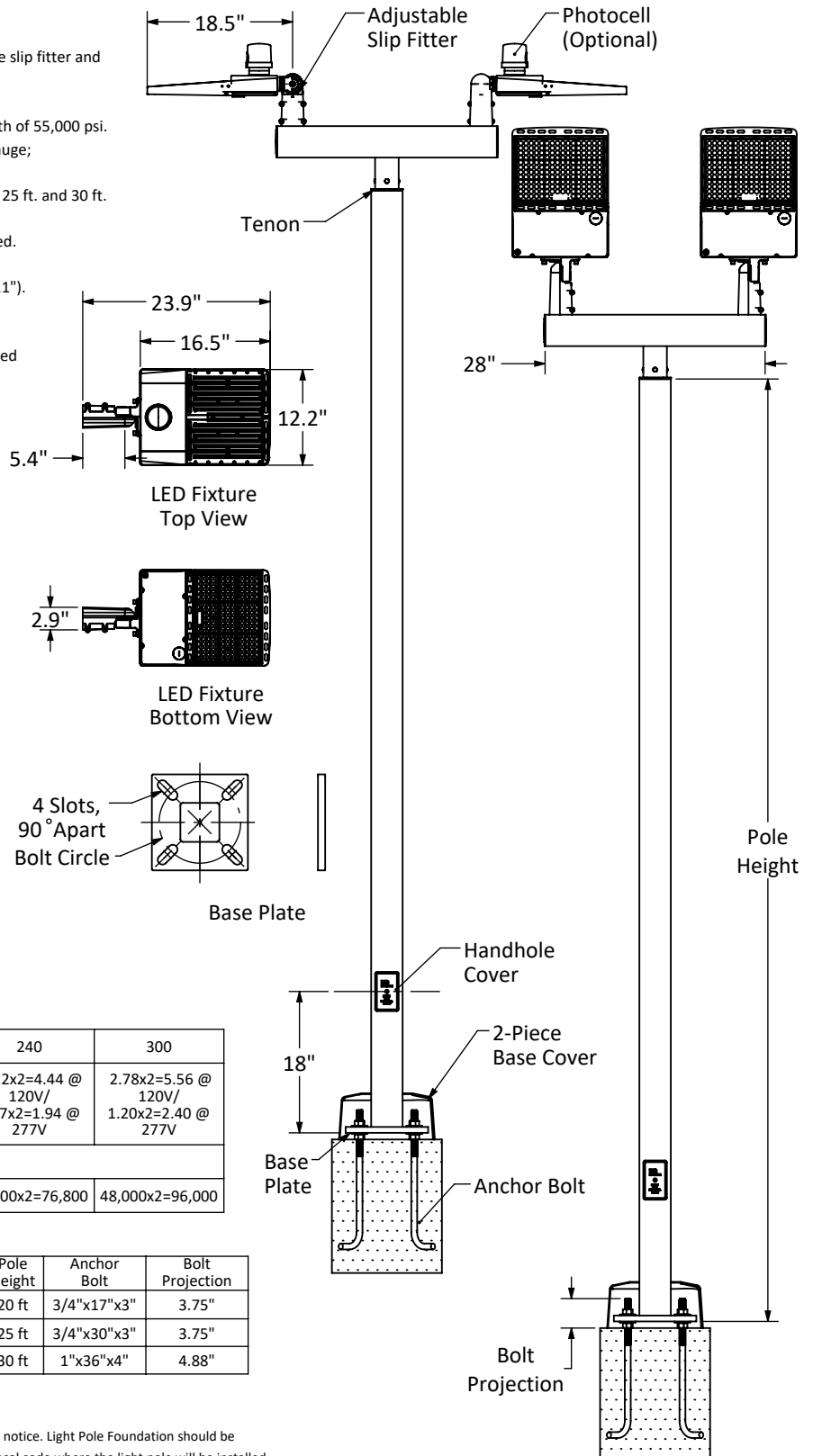
**UL Listing:** UL Listed for Wet Locations.

**DLC Listing:** DLC Premium.

**IP Rating:** IP66

**EPA Rating:** 0.7 ft<sup>2</sup>

**Warranty:** 5 Years



POWER (W)	150	200	240	300
AMPS	1.39x2=2.78 @ 120V/ 0.60x2=1.2 @ 277V	1.85x2=1.70 @ 120V/ 0.80x2=1.60 @ 277V	2.22x2=4.44 @ 120V/ 0.97x2=1.94 @ 277V	2.78x2=5.56 @ 120V/ 1.20x2=2.40 @ 277V
LUMENS/WATT	160			
LUMENS	24,000x2=48,000	32,000x2=64,000	38,400x2=76,800	48,000x2=96,000

Pole Height	Base Plate Dim	Slot Dim	Bolt Circle
20 ft, 25 ft	10.5" Sq.x 0.75"	0.98" x 2.5"	8.5"
30 ft	11" Sq. x 1"	1.15" x 1.9"	11.0"

Pole Height	Anchor Bolt	Bolt Projection
20 ft	3/4"x17"x3"	3.75"
25 ft	3/4"x30"x3"	3.75"
30 ft	1"x36"x4"	4.88"

**Disclaimer:** All dimensions and specifications are subject to change without any notice. Light Pole Foundation should be designed by an engineer familiar with local soil and wind conditions as well as local code where the light pole will be installed.