

PK0944A

Light Pole Kit with Four Adjustable LED Lights, Selectable Wattage 150/200/240/300 & Color Temperature, 20-30 Foot Pole Height Options



Job: _____
Job Site: _____ State: _____ Client Name: _____
Notes: _____ Approvals: _____ Date: _____

Commercial-grade LED Light Pole Assembly Includes:

Square steel light pole, 4 LED lights complete with adjustable slip fitters, low profile pole bracket, hardware, set of anchor bolts and a base cover.

Orientation Options: 1. Straight Inline

(see page 2) 2. 90° Orientation

Light Pole:

Pole Shaft: Commercial grade steel with minimum yield strength of 55,000 psi.

20 ft. poles: 4" square X 11 gauge; 25 ft. poles: 4" square X 7 gauge;

30 ft poles: 5" square X 7 gauge.

Pole Height: Standard pole height is 20 ft. Optional heights are 25 ft. and 30 ft.

Custom heights are also available.

Anchor Bolts: A set of 4 galvanized steel anchor bolts is provided.

Each anchor bolt includes 2 nuts and 2 washers.

Bolt Circle: 4"sq. Pole: 8-1/2" Bolt Circle (Bolt Circle range: 8"-11").

30 ft poles: 11" Bolt Circle (Bolt Circle range: 10" - 12")

Handhole: 3" X 5" size reinforced handhole is located at 18 inches from the base. A ground lug with set screw is located near the handhole opening for proper grounding of the pole.

Color: Dark Bronze

Base Cover: ABS Plastic base cover with rivets.

Warranty: 1 Year

LED Fixture:

Material: Aluminum construction with integrated fins to maximize heat dissipation.

Color: Dark Bronze.

Preset Power: 300 Watts

Voltage: 120-277 Volt standard.

Selectable Colors: 3000K; 4000K; 5000K

Preset Color Temperature: 5000K.

Light Distribution: Type 3 standard.

Type 4 and Type 5 options as special order.

Photocell: Photocell is optional.

Dimming: 0-10V Dimming Capable.

Dimming control not provided (field install).

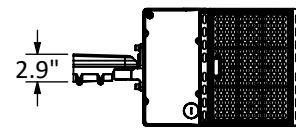
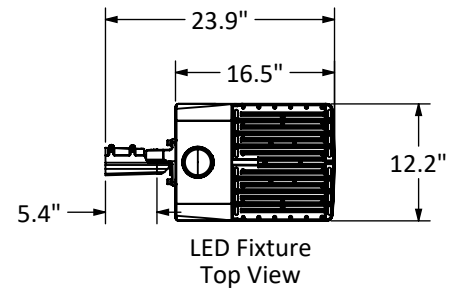
UL Listing: UL Listed for Wet Locations.

DLC Listing: DLC Premium.

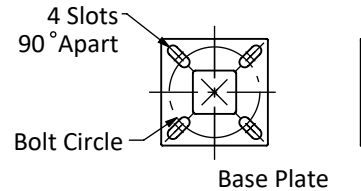
IP Rating: IP66

EPA Rating: 0.7 ft²

Warranty: 5 Years



LED Fixture
Bottom View



POWER (W)	150	200	240	300
AMPS	1.39x4=5.56@ 120V/ 0.60x4=2.40 @ 277V	1.85x4=7.40 @ 120V/ 0.80x4=2.40 @ 277V	2.22x4=8.88 @ 120V/ 0.97x4=3.88 @ 277V	2.78x4=11.12 @ 120V/ 1.20x4=4.80 @ 277V
LUMENS/WATT	160			
LUMENS	24,000x4=96,000	32,000x4=128,000	38,400x4=153,600	48,000x4=192,000

Pole Height	Anchor Bolt	Bolt Projection
20 ft	3/4"x17"x3"	3.75"
25 ft	3/4"x30"x3"	3.75"
30 ft	1"x36"x4"	4.88"

Pole Height	Base Plate Dim	Slot Dim	Bolt Circle
20 ft, 25 ft	10.5" Sq.x 0.75"	0.98" x 2.5"	8.5"
30 ft	11" Sq. x 1"	1.15" x 1.9"	11.0"



Disclaimer: All dimensions and specifications are subject to change without any notice. Light Pole Foundation should be designed by an engineer familiar with local soil and wind conditions as well as local code where the light pole will be installed.

PK0944A

Light Pole Kit with Four Adjustable LED Lights,
Selectable Wattage 150/200/240/300 & Color Temperature,
20-30 Foot Pole Height Options



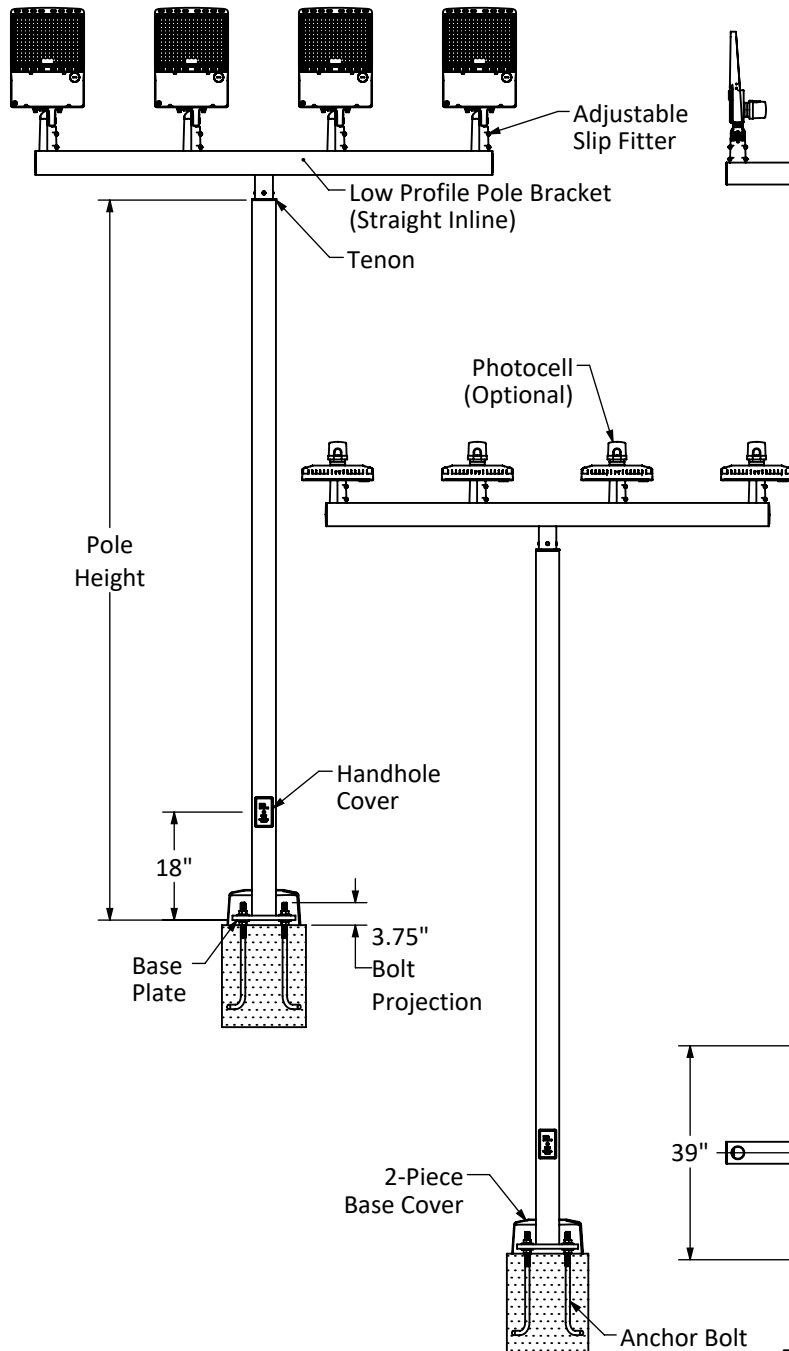
Job: _____

Job Site: _____ State: _____

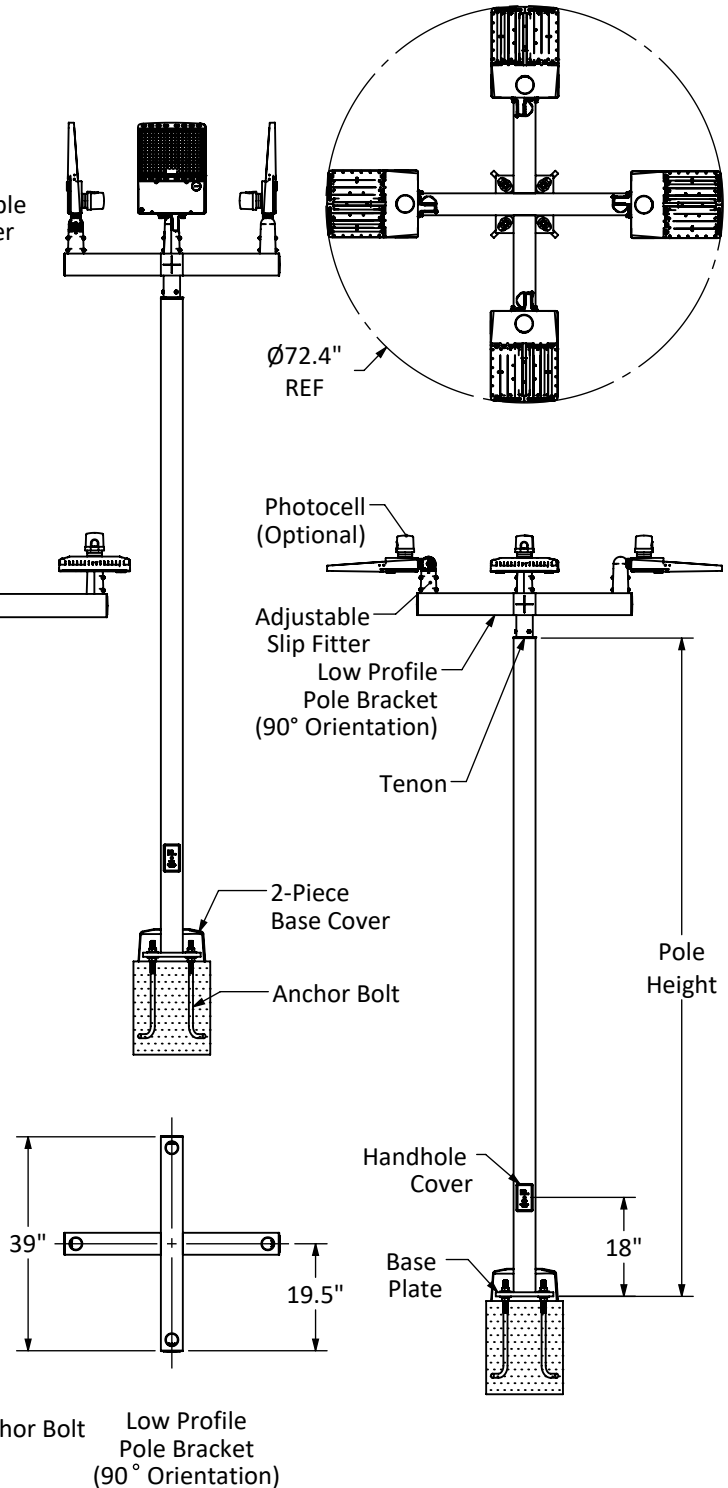
Client Name: _____

Notes: _____ Approvals: _____ Date: _____

1. Straight Inline



2. 90° Orientation



Disclaimer: All dimensions and specifications are subject to change without any notice. Light Pole Foundation should be designed by an engineer familiar with local soil and wind conditions as well as local code where the light pole will be installed.