

4

3

2

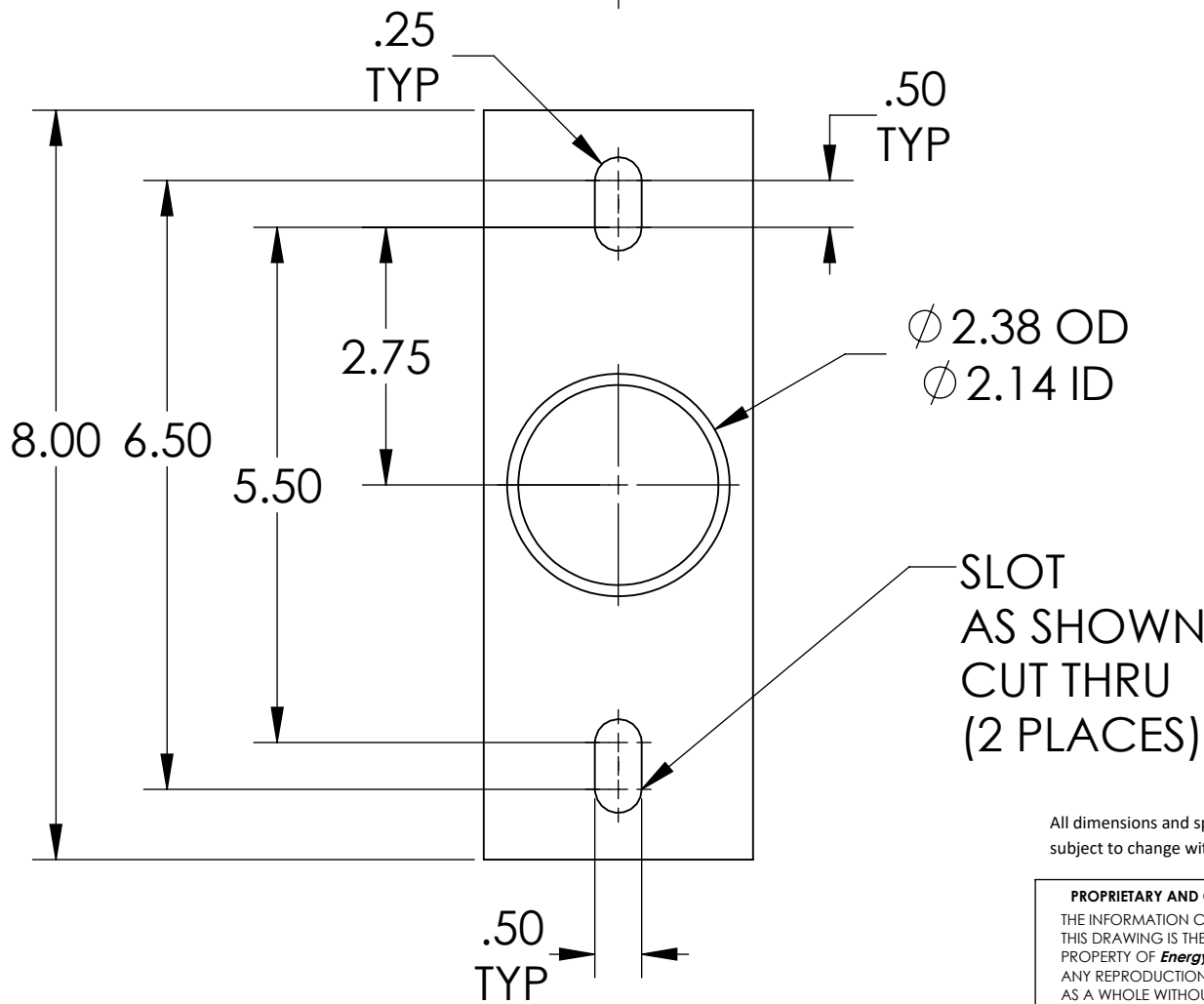
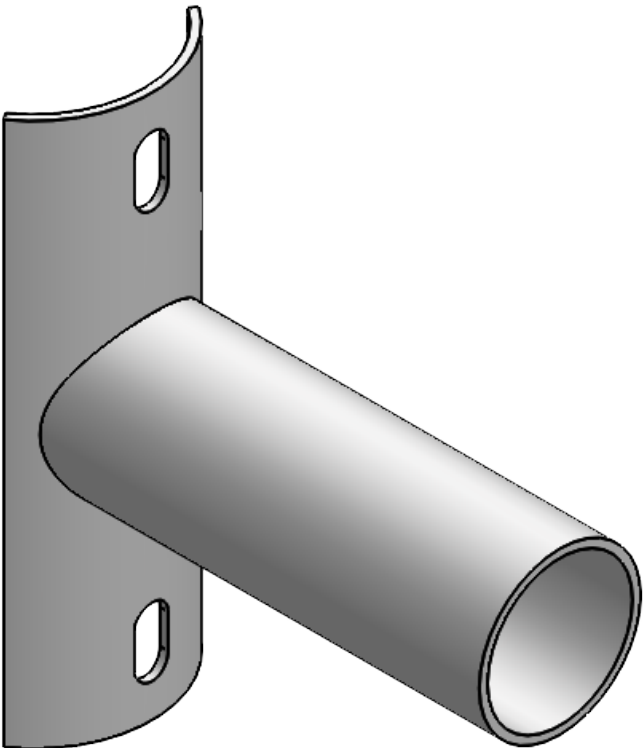
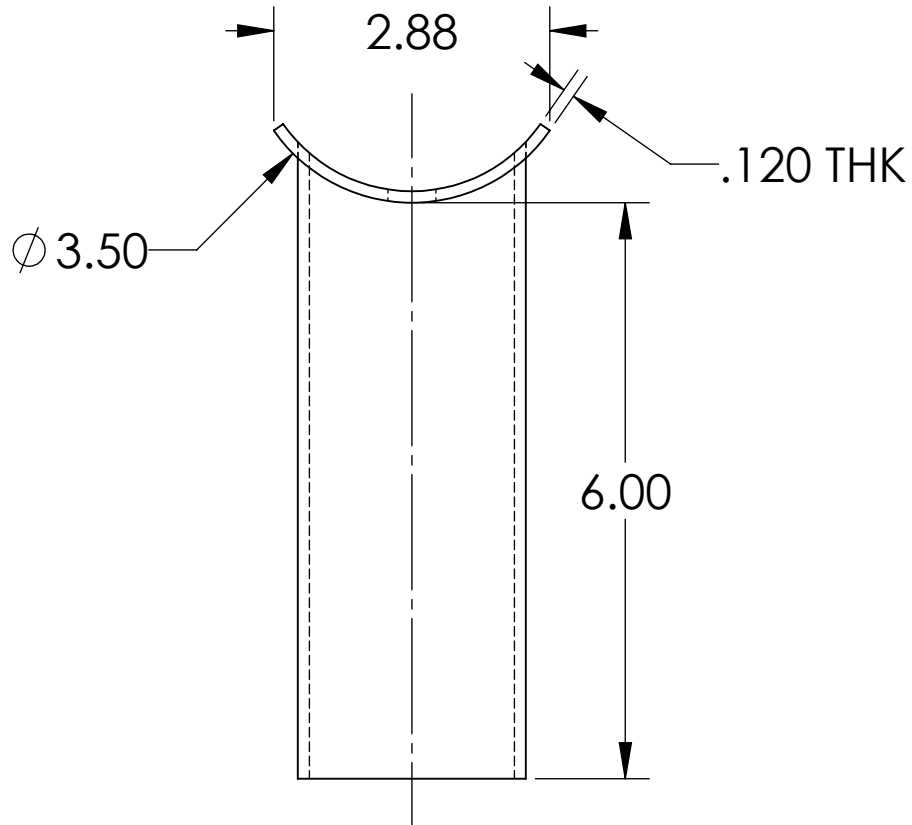
1

B

B


A

A



All dimensions and specifications are subject to change without any notice.

PROPRIETARY AND CONFIDENTIAL
THE INFORMATION CONTAINED IN THIS DRAWING IS THE SOLE PROPERTY OF *Energy Light, Inc.* ANY REPRODUCTION IN PART OR AS A WHOLE WITHOUT THE WRITTEN PERMISSION OF *Energy Light, Inc.* IS PROHIBITED.

		UNLESS OTHERWISE SPECIFIED:		NAME	DATE	TITLE: Side Tenon for Round Poles	
		DIMENSIONS ARE IN INCHES	DRAWN	MKA	10-30-20		
		TOLERANCES:	ENG APPR.				
		FRACTIONAL $\pm 1/64$	MFG APPR.				
		ANGULAR: $\pm 0.5^\circ$				SIZE B	
		TWO PLACE DECIMAL ± 0.01					
		THREE PLACE DECIMAL ± 0.005	Q.A.			ITEM NO. R10077	
		INTERPRET GEOMETRIC TOLERANCING PER:	 Energy Light, Inc. 1881 Rose Road Lake Zurich, IL 60047			REV	
		MATERIAL					
		STEEL					
		FINISH					
NEXT ASSY	USED ON					SCALE: 1:2	
APPLICATION		DO NOT SCALE DRAWING				WEIGHT: 2.6 lbs	SHEET 1 OF 1